

■ General Description

The AME6602 is an integrated power switch for self-powered and bus-powered Universal Serial Bus (USB) application. The AME6602 has several protections features such as current limiting and thermal shutdown to prevent catastrophic switch failure caused by increasing power dissipation when continuous heavy loads or short circuit occurs. A built-in P-channel MOSFET used for power MOS has superior R_{on} and easy control characteristics. The output reverse-current protection turns off the MOSFET switch whenever occurs the unexpected continuously reverse current. \overline{FLAG} pin is an open-drain output report overcurrent or over-temperature event and has typical 8ms deglitch timeout period. AME6602 is available in SOT-25, TSOT-25A, TSOT-26A, MSOP-8 & DFN-6D(2x2x0.75mm) packages.

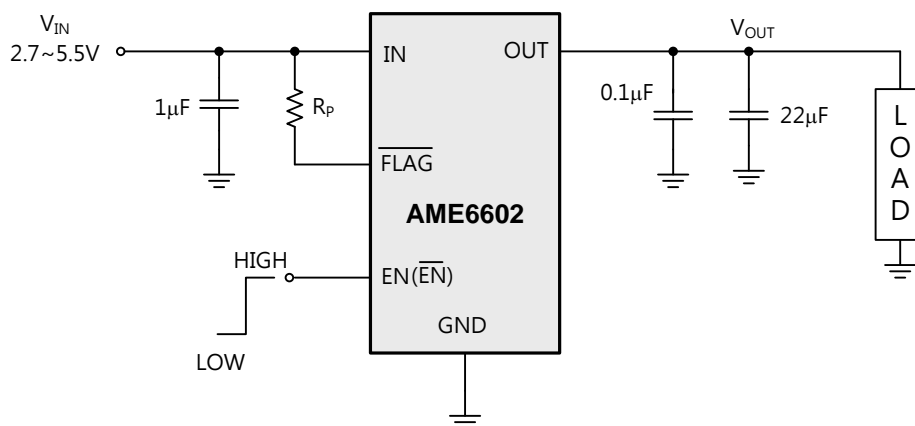
■ Features

- Operating Range: 2.7V to 5.5V
- 75m Ω (Typ.) High-Side MOSFET
- Constant Current during Over-Current and Current Limit with Fold-Back are Available
- Active High or Active Low Version is Available
- 1.4ms Rise Time at $V_{IN} = 3.3V$ Condition
- Fast Short-Circuit Response: 1.5 μ S(Typ.)
- Under Voltage Lockout, Over-Current, Output-Voltage and Thermal Protection
- Deglitched Open-Drain Flag Output (\overline{FLAG})
- RoHS, Halogen Free and TSCA Compliance
- UL Certification-File No. E529690

■ Application

- Laptops, Desktops, AIO
- Set-Top Boxes
- LCD TVs & Monitors
- Residential Gateways
- e-Readers, Printers, Hubs
- Docking, HUB

■ Typical Application Schematic





www.ame.com.tw

E-mail: sales@ame.com.tw

Life Support Policy:

These products of AME, Inc. are not authorized for use as critical components in life-support devices or systems, without the express written approval of the president of AME, Inc.

AME, Inc. reserves the right to make changes in the circuitry and specifications of its devices and advises its customers to obtain the latest version of relevant information.

© AME, Inc. , October 2023

Document: P003-DS6602-D.01

**Corporate Headquarter
AME, Inc.**

8F-1, 12, WenHu St., Nei-Hu

Taipei 114, Taiwan .

Tel: 886 2 2627-8687

Fax: 886 2 2659-2989