

■ General Description

The AME8891's ultra-low I_Q (500nA) is designed specifically for the applications requiring extreme low quiescent current. This LDO could increase battery life through maintaining low I_Q consumption even in drop-out mode.

The feature of 0.5 μ A low quiescent current and 0.1 μ A shutdown current are ideal for the battery application with long service life. The other features include current limit function, over temperature protection and output discharge function.

Package available in SOT-25 & DFN-4A(1x1x0.4mm).

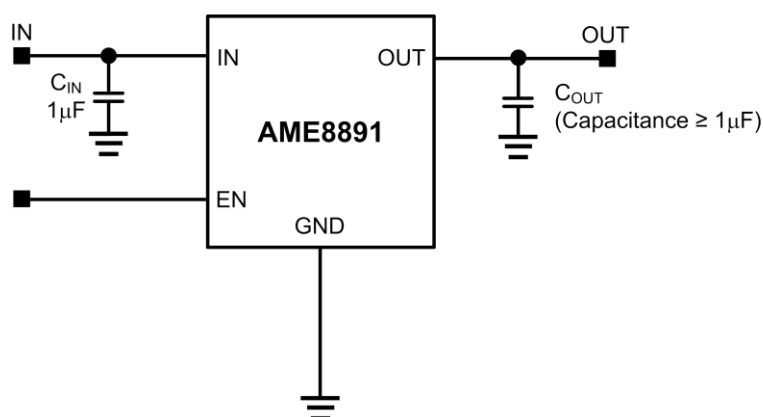
■ Features

- Input Voltage Range: 2.5V to 5.5V
- Output Voltage Range: 1.2V to 4.5V
- Output Voltage Tolerance: $\pm 2\%$
- Low Quiescent Current: 500nA(Max)
- Dropout Voltage: 400mV(typ.)@ 300mA
- Over Temperature Protection
- Internal Short-Circuit Current Limit
- RoHS, Halogen Free & TSCA Compliance

■ Application

- Portable Device, Tablet and Smartphone
- Camera, VCR and Car Dashboard Camera
- Communications and Infrastructure
- AR and VR Application
- FA Equipment and Smart Meter

■ Typical Application Schematic





www.ame.com.tw

E-mail: sales@ame.com.tw

Life Support Policy:

These products of AME, Inc. are not authorized for use as critical components in life-support devices or systems, without the express written approval of the president of AME, Inc.

AME, Inc. reserves the right to make changes in the circuitry and specifications of its devices and advises its customers to obtain the latest version of relevant information.

© AME, Inc. , July 2023

Document: A038-DS8891-A.01

Corporate Headquarter
AME, Inc.

8F-1, 12, WenHu St., Nei-Hu Dist.,

Taipei 114, Taiwan..

Tel: 886 2 2627-8687

Fax: 886 2 2659-2989