

■ General Description

The AME6204 is a small, low R_{ON} , single-channel load switch with enable function. The device contains a N-channel MOSFETs that can operate over an input voltage range of 0.8V to 5.5V and can offer a maximum continuous current of 6A.

The EN pin is controlled by an on and off input, which can be driven directly by low-voltage control signals. In AME6204, a 225Ω on-chip load resistor is added for quick-output discharge when AME6204 is turned off. It's available in a small, space-saving DFN-8D (2 x 2 x 0.75mm) package with thermal pad allowing for high power dissipation.

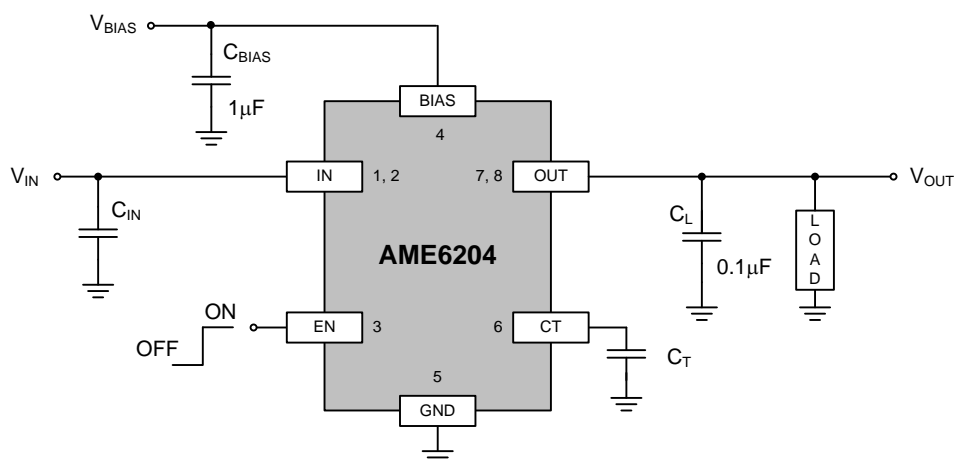
■ Features

- Input Voltage Range: 0.8V to 5.5V
- Bias Voltage Supports: 2.5V to 5.5V
- Integrated Single-Channel Load Switch
- 6A Maximum Continuous Current
- Ultra low $R_{DS(ON)}$ 23mΩ
- Low Quiescent Current (46μA)
- Thermal Protection
- Adjustable Rise Time
- Quick Output Discharge (QOD)
- DFN-8D (2 x 2 x 0.75mm) Package with Thermal Pad
- RoHS Compliant

■ Application

- Ultrabook, Notebooks and Netbooks
- Tablet PCs
- Consumer Electronics
- Set-top Boxes and Residential Gateways
- Telecom Systems
- Solid-State Drives (SSD)

■ Typical Application Schematic





www.ame.com.tw

E-mail: sales@ame.com.tw

Life Support Policy:

These products of AME, Inc. are not authorized for use as critical components in life-support devices or systems, without the express written approval of the president of AME, Inc.

AME, Inc. reserves the right to make changes in the circuitry and specifications of its devices and advises its customers to obtain the latest version of relevant information.

© AME, Inc. , March 2023

Document: P004-DS6204-D.02

**Corporate Headquarter
AME, Inc.**

8F-1, 12, WenHu St., Nei-Hu Dist.,

Taipei 114, Taiwan..

Tel: 886 2 2627-8687

Fax: 886 2 2659-2989