

■ General Description

The AME8903 is CMOS LDO regulator sourcing 500mA output current. The input voltage is as low as 1.4V and the output voltage can be set from 0.8V. The device consume 40 μ A of quiescent current (no load).

EN pin input logic level to control ON/OFF of the output voltage. The features low noise, high PSRR and good line/load transient. The device support protection such as over-load, short circuit and overheating.

■ Application

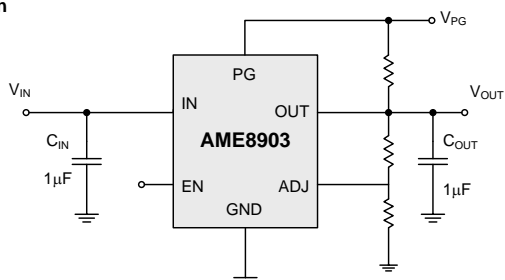
- Laptop, AIO, Mini PC
- Battery Powered Equipment
- Portable Communication Equipment
- Cameras, Image Sensors and Camcorders

■ Features

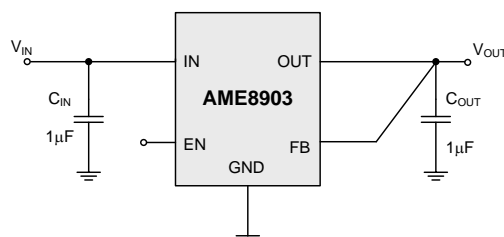
- Operating Input Voltage: 1.4V to 5.5V
- Adjustable Output Voltage: 0.8V to 5V
- Fixed Output Voltage: 0.8V to 4.5V(0.1V steps)
- Quiescent Current: 40 μ A(typ.)
- Low Dropout : 120mV(typ.) @0.5A, $V_{OUT} = 2.5V$
- Output Voltage Accuracy : $\pm 0.8\%$ ($V_{OUT} > 1.8V$)
- Stable with Small 1 μ F Ceramic Capacitors
- Over-Current Protection
- Thermal Shutdown Protection : 160°C
- Auto Output Discharge Function
- Available in SOT-25 & DFN-6G(1.2x1.2x0.37mm) & DFN-6D(2x2x0.75mm) Packages
- RoHS, Halogen Free and TSCA Compliance

■ Typical Application Schematic

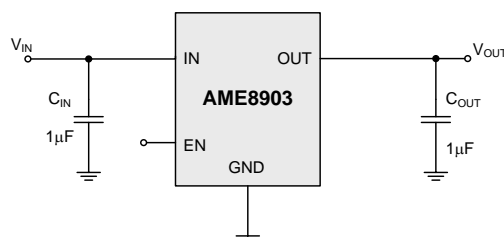
ADJ Version



Fix Version- with V_{FB}



Fix Version – without V_{FB}





www.ame.com.tw

E-mail: sales@ame.com.tw

Life Support Policy:

These products of AME, Inc. are not authorized for use as critical components in life-support devices or systems, without the express written approval of the president of AME, Inc.

AME, Inc. reserves the right to make changes in the circuitry and specifications of its devices and advises its customers to obtain the latest version of relevant information.

© AME, Inc. , September 2023

Document: G006-DS8903-D.01

Corporate Headquarter
AME, Inc.

8F-1, 12, WenHu St., Nei-Hu

Taipei 114, Taiwan .

Tel: 886 2 2627-8687

Fax: 886 2 2659-2989